



**SOLID WASTE
AUTHORITY**
RECYCLE



Sweater Weather, Cleaner Together

The air is crisp, the leaves are falling, and it's the perfect time to give your recycling routine a fall refresh. From pumpkin carving to yard cleanups, small changes this season can make a big impact. Keep reading for recycling updates, community news, and tips to make your autumn a little greener.

The MRF continues to make great strides in processing and selling materials to recycling end markets! You can find the full update later in this newsletter.

Over the first two months, the Fairhope CHaRM has welcomed a large number of customers. We're proud to have so many recycling-minded citizens in our community who want to do the right thing for the planet. As for the Magnolia CHaRM, we're excited to announce that its official opening date is scheduled for the same day as our America Recycles Day celebration!

As Halloween approaches, everyone is planning costumes, carving pumpkins, and stocking up on candy. Be sure to check out our sustainable Halloween tips later in the newsletter.

Members of the SWDA recently had the opportunity to attend the PEP Expo in Mobile and the Magnolia Springs Firefighter Festival. Attending these events was a great way to educate citizens about all the initiatives happening here at the SWDA.

As the MRF begins receiving and processing materials from additional areas, SWDA team members will continue engaging with the community to promote recycling. Check later in the newsletter to see where we'll be making our next appearances!

The SWDA is also excited to welcome new members to the recycling team. We're thrilled to have them join us and look forward to seeing them grow in their roles.

Some SWDA employees have been passionate about recycling long before joining the MRF. This month, we're highlighting one of our amazing team members who was dedicated to recycling even before working with us.

In This Newsletter Issue:

MRF Update

CHaRM Update

Eco Friendly Halloween Tips

Community Engagement

Art for Heart

Where to Find Us In the Community

New Recycle Team Members

Recycle Warriors



MRF Update



In September, the MRF processed 352.16 tons of recyclables and exported 338.76 tons to end markets—equal to 15 outbound loads. Of those, 10 were Old Corrugated Cardboard (OCC), 4 were Mixed Paper, and 1 was Aluminum. Thanks to the continued efforts of Baldwin County residents and municipalities, valuable materials are being recovered and given new life.

CHaRM Update



In September, 600 customers visited the Fairhope CHaRM—thank you for supporting recycling in our community! The Magnolia CHaRM is almost ready, and we're excited to celebrate its Grand Opening on November 15th during our America Recycles Day event. Join us for tours, activities, and fun as we kick off this new chapter in sustainable living!

ECO-FRIENDLY HALLOWEEN TIPS



Reuse costumes or swap with friends



Choose reusable bags for trick-or-treating



Decorate with natural items like pumpkins



Compost your jack-o'-lanterns instead of throwing it away



Community Engagement



On October 16th, members of the SWDA attended the Partners for Environmental Progress (PEP) Reverse Trade Show in Mobile to share information about recycling and showcase the many initiatives we're implementing to support sustainability.



On October 18th, Jennifer Doan and Susan Kilby attended the Magnolia Springs Firefighter Festival to share information about our recycling initiatives and educate residents on how to recycle effectively.

Art for Heart

Terri Graham, our CEO, has been nominated as a Leader of Impact for the American Heart Association this year. She is raising funds to provide life-saving heart devices in public buildings and schools to be used in emergencies.

Our team has already raised \$7,125 of our \$10,000 goal! If you'd like to support Terri or anyone on her team, please visit:

<http://www2.heart.org/goto/swdaterrri>



Where To Find Us in the Community

The SWDA is excited to strengthen our connection with the community by sharing tips on recycling, waste reduction, and sustainability. This October, we're stepping up our outreach with events across Baldwin County to engage residents, businesses, and local organizations.

Come meet our team, ask questions, and learn easy ways to reduce waste at home and at work. Whether you're new to recycling or a long-time pro, there's something for everyone!

Here's where you can find us this month:

- November 15th: America Recycles Day
- November 18th: Elected Officials Luncheon

New Recycle Team Members



The SWDA is thrilled to welcome two new members to our recycling team at the MRF! Braxton and Carmen have joined us from day one and are already making a positive impact on our operations.

Both bring energy, dedication, and a shared passion for sustainability, helping us continue to provide efficient recycling services to our community. Their arrival strengthens our team and allows us to better support Baldwin County residents in their recycling efforts.

Please join us in welcoming Brandon and Carmen to the SWDA family—we're excited to have them as part of our mission to reduce waste and promote a greener future!

Recycle Warriors



Meet Bailey Callaway, a dedicated Recycle Tech II at our new MRF. Bailey's passion for recycling began long before joining SWDA, and his commitment continues to shine through in his daily work. He plays a vital role in ensuring Baldwin County's recycling operations run efficiently. We're proud to celebrate his recent promotion to Operator II and grateful to have him on our team!

America Recycles Day!



On November 15th, the SWDA will host a special event in celebration of America Recycles Day. This fall festival-themed event will feature tours of the Waste and Recycling Adventure Center and the MRF, along with arts and crafts, food trucks, face painting, live music, a photo booth, and more! If you're interested in attending, be sure to mark your calendar—you won't want to miss it!

Holiday Schedule



Thanksgiving Holiday

Thursday, November 27, 2025

ALL LANDFILLS CLOSED

MRF AND ALL CHARMS CLOSED

Day After Thanksgiving

Friday, November 28, 2025

OPEN - Magnolia Landfill, Bay Minette Transfer Station, MRF and Magnolia CHaRM

CLOSED - MacBride Landfill, Eastfork Landfill, Fairhope CHaRM

Christmas Holiday

Thursday, December 25, 2025

ALL LANDFILLS CLOSED

MRF AND ALL CHARMS CLOSED

New Year's Holiday

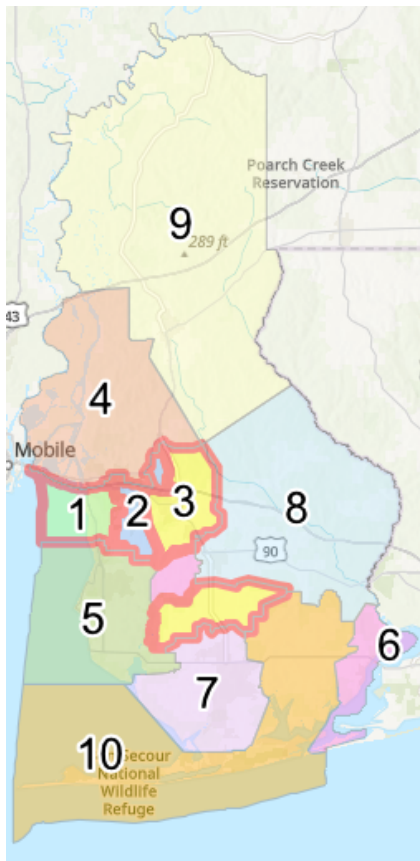
Thursday, January 1, 2026

ALL LANDFILLS CLOSED

MRF AND ALL CHARMS CLOSED



Curbside Recycling



Want curbside recycling but not sure if it's available in your area? Check out this map to see when service will start near you.

Curbside recycling makes it easy to reduce waste and protect the environment—sign up today and start recycling right at your doorstep!

1. Daphne (inside/outside city limits, west of 181 and south of I-10) **Active**
2. Belforest, Daphne (inside/outside city limits, east of 181 and north I-10), Malbis, and Spanish Forts Stonebridge **Active**
3. Loxley and Summerdale (inside/outside of city limits) **Active**
4. Bromley, Carpenter, Crossroads, Hurricane, Spanish Fort (inside/outside city limits) Stapleton, Steelwood, Pine Haven, Whitehouse Forks **Starts December 1st, 2025**
5. Barnwell, Clay City, Fairhope (outside city limits), Marlow, and Magnolia Springs (inside/outside city limits) **Starts February 2nd, 2026**
6. Lillian, Silverhill (inside/outside city limits), and Ono Island **Starts April 6th, 2026**
7. Bon Secour and Foley (outside city limits), Gulf Shores (outside city limits) **Starts June 1st, 2026**
8. Elsanor, Gateswood, Robertsedale (inside/outside city limits), Rosinton, Seminole **Starts August 3rd, 2026**
9. Bay Minette (inside/outside city limits), Blacksher, Georgetown, Gopher Hill, Latham, Little River, Lottie, Phillipsville, Rabun, Redtown, Stockton, Tensaw, and Vangordon **Starts October 5th, 2026**
10. Elberta (inside/outside city limits), Fort Morgan, Josephine, Miflin, Perdido Beach **Starts December 7th, 2026**

What to Recycle and Where

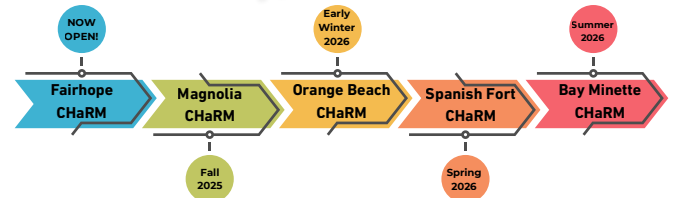
What Can You Recycle in Baldwin County and Where?

The Solid Waste Disposal Authority is committed to promoting environmental sustainability through our comprehensive recycling efforts. As part of our ongoing initiative, we are now accepting the following materials for recycling at our Materials Recovery Facility (MRF). Residents can conveniently recycle these items in several ways:

- **At any of our existing recycling drop-off locations** throughout the community
 - **At one of our upcoming CHaRM (Center for Hard-to-Recycle Materials) sites**, which will be opening soon to expand recycling options
 - **And through future curbside programs** that will be launched in additional areas across the county
- By utilizing these services, you are helping to save space in the landfill, conserve resources, and protect our environment for future generations. Stay tuned for updates on new locations and expanded services as we continue to grow our recycling efforts.



CHaRM Timeline



Contact Us!

Main Office:
251.972.6878

Susan Kilby-Aaron
Director of Recycle Services
Skilby@baldwincountyswda.org

Jennifer Doan
Recycling Outreach Coordinator
Jennifer.Doan@baldwincountyswda.org

Craig Jackson
MRF Manager
Craig.Jackson@baldwincountyswda.org

Thanks for Reading!

This is a monthly publication so be on the lookout for the next edition in November 2025!

If you would like to be added to the newsletter list please email Jennifer Doan at Jennifer.Doan@baldwincountyswda.org

For more waste and recycling information please visit: baldwincountyswda.org