



SOLID WASTE AUTHORITY RECYCLE



Carve Out Time to Recycle

As we head into the Thanksgiving season, it's the perfect time to appreciate our community and the role each of us plays in protecting it. This month, we're highlighting updates, tips, and resources to help you recycle right all season long.

The MRF continues to make great strides in processing and selling materials to recycling end markets. You can find the full update later in this newsletter.

The Fairhope CHaRM has welcomed a strong number of customers during its first few months of operation and has received a steady stream of hard-to-recycle items, along with single-stream materials. As for the Magnolia CHaRM, we're excited to announce that it is officially open.

With Thanksgiving right around the corner, many of us are planning recipes and gathering ingredients. Be sure to check out our tips for a healthy and organic Thanksgiving meal.

The SWDA donated recycling books to the Bay Minette Public Library for their Halloween Trick-or-Treat event. We were happy to support a great cause and help teach children about recycling through reading.

Over the past seven weeks, Terri Graham and members of her team raised money to support the fight against heart disease and to provide AEDs in schools and public places. We are proud to share that Terri was named the Coastal Alabama Leader of Impact for 2025.

Geocycle welcomed a school group for a tour of their facility, where students learned how the company diverts waste through its cement-making process.

Many people purchase live Christmas trees each year, but aren't always sure what to do with them once the season is over. Instead of throwing them away, be sure to recycle your live Christmas trees.

We had a great time celebrating America Recycles Day on November 15th. Visitors enjoyed touring the facility and dropping off their recycling at the new Magnolia CHaRM.

In This Newsletter Issue:

MRF Update

CHaRM Update

**Healthy & Organic
Thanksgiving**

Community Engagement

Leaders of Impact

Sustainability Shoutout

Christmas Tree Recycling

America Recycles Day



MRF Update



In October, the MRF reported an inbound tonnage of 384.16 tons, reflecting the continued growth of recycling participation across our service areas. Of this total, 16.51 tons were collected through the curbside recycling program.

Once materials were sorted and processed, the MRF successfully exported 347.40 tons to recycling end markets. This steady flow of outbound material helps ensure that recyclables are transformed into new products, reducing waste and supporting the circular economy.

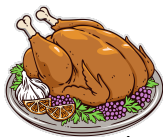
CHaRM Update



In October, the Fairhope CHaRM welcomed a total of 2,788 customers since its opening in August, highlighting the community's commitment to keeping hard-to-recycle materials out of landfills. In November, we celebrated the grand opening of the Magnolia CHaRM during our America Recycles Day event. The new facility gives residents additional opportunities to drop off recyclables and hard-to-recycle items, further supporting sustainable practices across the region.

Healthy and Organic Thanksgiving

Enjoy a nutritious Thanksgiving by choosing organic, seasonal produce like squash, sweet potatoes, and Brussels sprouts, incorporating plant-based dishes, and selecting lean proteins such as white turkey meat. Fill half your plate with non-starchy vegetables, opt for whole grains, and make lighter sauces and desserts using natural sweeteners.



Quick Tips:

- **Go organic & local:** Support farmers and reduce exposure to pesticides.
- **Boost plant-based dishes:** Roasted vegetables or quinoa-stuffed squash add flavor and nutrition.
- **Choose lean protein:** White turkey meat is lower in fat.
- **Use whole grains:** They provide more fiber and nutrients than refined grains.
- **Make sauces & desserts healthier:** Use plant-based milk, less butter, and natural sweeteners; try whole-grain or nut-based crusts.

Community Engagement



The SWDA donated recycling books to the Bay Minette Public Library to be used during their Halloween Trick-or-Treat event. We were excited to support this fun, community-centered celebration while promoting recycling awareness among children. By combining festive activities with educational resources, the library was able to teach young participants the importance of recycling in a fun and engaging way.

Leaders of Impacts



Our amazing CEO, Terri Graham, was named a winner of the Leaders of Impact for Coastal Alabama. She and the SWDA team successfully raised over \$20,000 to place AEDs in schools and public spaces.

Sustainability Shout-Out



This month, we want to give a shoutout to Geocycle, located in Theodore, AL. We've had the opportunity to get to know their team and learn how important waste diversion is to them. In October, they hosted a tour for Hankins Middle School to visit their site and see firsthand how they divert waste from the landfill in their concrete-making process.

Holiday Items to Take to the CHaRM

With the holiday season underway, many of us are preparing for Thanksgiving and either have already decorated for Christmas or are getting ready to do so. When cooking for Thanksgiving, you may have leftover cooking grease. Instead of pouring it down the drain (which you should never do) or throwing it in the trash, collect it in a container and take it to the Fairhope or Magnolia CHaRM for proper disposal.

As you decorate for Christmas and sort through decorations, you might find some Christmas lights that no longer work. Rather than tossing them in the trash, bring them to the Fairhope or Magnolia CHaRM to be recycled.

Christmas Tree Recycling

If you have a live Christmas tree for the holidays and aren't sure what to do with it once the season is over, don't just throw it away. You can take your tree to one of our designated Christmas tree recycling sites, where it will be properly processed and repurposed instead of ending up in a landfill.

Recycling your tree helps protect the environment and supports sustainable practices in our community.

To find the nearest recycling locations and learn more about our Christmas tree recycling program, please visit our website: baldwincountyswda.org.



SWDA Awarded GOMESA Funds for Orange Beach CHaRM



The Solid Waste Disposal Authority of Baldwin County has been awarded \$1,500,224 in Gulf of Mexico Energy Security Act (GOMESA) funds. The investment will support development of the Orange Beach Center for Hard to Recycle Materials Facility (CHaRM), a project that will expand recycling access and strengthen sustainability efforts across Baldwin County's communities.

The funding, provided through GOMESA, represents a major investment in the county's long-term waste reduction and environmental stewardship goals. Once complete, the Orange Beach CHaRM will provide residents and visitors with a centralized, accessible location to properly dispose of recyclable materials, reducing landfill waste and promoting cleaner coastal habitats.

SWANA Award



The Alabama Chapter of SWANA recognized the Baldwin County Waste and Recycle Adventure Center with the William Gerald Hardy Project of the Year Award on November 6, 2025, during the annual Fall Forum in Guntersville, Alabama. This award highlights the center's outstanding contributions to advancing waste management and recycling education in the region. The recognition reflects the hard work, innovation, and dedication of the entire team that helped bring the Adventure Center to life and continues to support its mission of promoting sustainable practices within the community.

America Recycles Day!



**Reduce
Reuse
Recycle**



November 15th was America Recycles Day. To celebrate, the SWDA hosted an event at the Baldwin County MRF and marked the grand opening of the Magnolia CHaRM, welcoming visitors to tour the facility and learn more about recycling.

Holiday Schedule



Thanksgiving Holiday

Thursday, November 27, 2025

ALL LANDFILLS CLOSED

MRF AND ALL CHARMS CLOSED

Day After Thanksgiving

Friday, November 28, 2025

OPEN - Magnolia Landfill, Bay Minette Transfer Station, MRF and Magnolia CHaRM

CLOSED - MacBride Landfill, Eastfork Landfill, Fairhope CHaRM

Christmas Holiday

Thursday, December 25, 2025

ALL LANDFILLS CLOSED

MRF AND ALL CHARMS CLOSED

New Year's Holiday

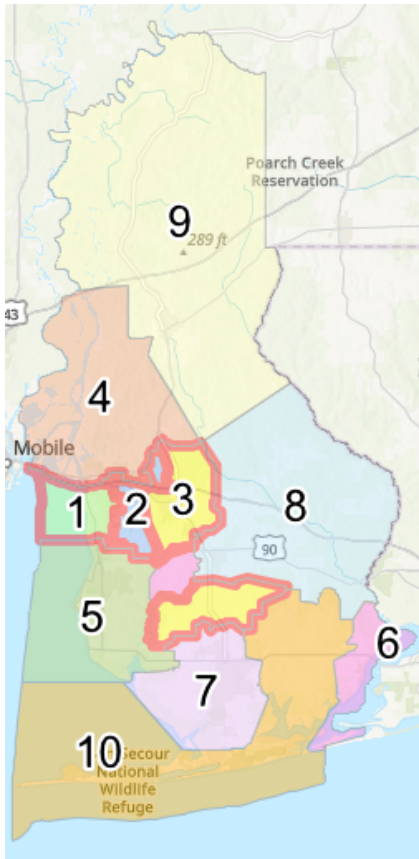
Thursday, January 1, 2026

ALL LANDFILLS CLOSED

MRF AND ALL CHARMS CLOSED



Curbside Recycling



Want curbside recycling but not sure if it's available in your area? Check out this map to see when service will start near you.

Curbside recycling makes it easy to reduce waste and protect the environment—sign up today and start recycling right at your doorstep!

1. Daphne (inside/outside city limits, west of 181 and south of I-10) **Active**
2. Belforest, Daphne (inside/outside city limits, east of 181 and north I-10), Malbis, and Spanish Forts Stonebridge **Active**
3. Loxley and Summerdale (inside/outside of city limits) **Active**
4. Bromley, Carpenter, Crossroads, Hurricane, Spanish Fort (inside/outside city limits) Stapleton, Steelwood, Pine Haven, Whitehouse Forks **Starts December 1st, 2025**
5. Barnwell, Clay City, Fairhope (outside city limits), Marlow, and Magnolia Springs (inside/outside city limits) **Starts February 2nd, 2026**
6. Lillian, Silverhill (inside/outside city limits), and Ono Island **Starts April 6th, 2026**
7. Bon Secour and Foley (outside city limits), Gulf Shores (outside city limits) **Starts June 1st, 2026**
8. Elsanor, Gateswood, Robertsedale (inside/outside city limits), Rosinton, Seminole **Starts August 3rd, 2026**
9. Bay Minette (inside/outside city limits), Blacksher, Georgetown, Gopher Hill, Latham, Little River, Lottie, Phillipsville, Rabun, Redtown, Stockton, Tensaw, and Vangordon **Starts October 5th, 2026**
10. Elberta (inside/outside city limits), Fort Morgan, Josephine, Miflin, Perdido Beach **Starts December 7th, 2026**

What to Recycle and Where

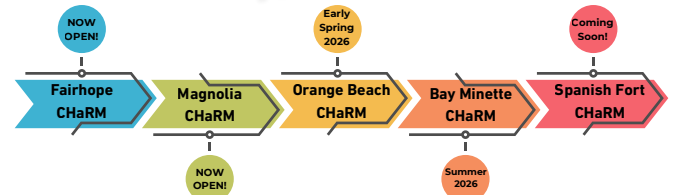
What Can You Recycle in Baldwin County and Where?

The Solid Waste Disposal Authority is committed to promoting environmental sustainability through our comprehensive recycling efforts. As part of our ongoing initiative, we are now accepting the following materials for recycling at our Materials Recovery Facility (MRF). Residents can conveniently recycle these items in several ways:

- **At any of our existing recycling drop-off locations** throughout the community
 - **At one of our upcoming CHaRM (Center for Hard-to-Recycle Materials) sites**, which will be opening soon to expand recycling options
 - **And through future curbside programs** that will be launched in additional areas across the county
- By utilizing these services, you are helping to save space in the landfill, conserve resources, and protect our environment for future generations. Stay tuned for updates on new locations and expanded services as we continue to grow our recycling efforts.



CHaRM Timeline



Contact Us!

Main Office:
251.972.6878

Susan Kilby-Aaron
Director of Recycle Services
Skilby@baldwincountyswda.org

Jennifer Doan
Recycling Outreach Coordinator
Jennifer.Doan@baldwincountyswda.org

Craig Jackson
MRF Manager
Craig.Jackson@baldwincountyswda.org

Thanks for Reading!

This is a monthly publication so be on the lookout for the next edition in December 2025!

If you would like to be added to the newsletter list please email Jennifer Doan at Jennifer.Doan@baldwincountyswda.org

For more waste and recycling information please visit: baldwincountyswda.org