



# SOLID WASTE AUTHORITY RECYCLE



## Start Fresh: Recycle More, Waste Less!

As the holiday season comes to a close, we hope you had a joyful time celebrating with loved ones. Now, let's jump into 2025 with fresh enthusiasm and some exciting new recycling initiatives! Get involved with the upcoming MRF and WRAC openings, and together, we can make Baldwin the most sustainable county in Alabama! Let's also take the opportunity to learn more by connecting with SWDA and other sustainability partners who can guide us in recycling the right way from the start.

We're thrilled to share that our MRF and WRAC are almost finished! We've started the soft launch of the sorting line, testing all components of the system, including the baler.

We're excited to announce that Fulcrum Construction Group has begun with site work and clearing at the Fairhope CHaRM (Center for Hard to Recycle Materials) as of the week of January 13th! Fairhope residents, along with those from neighboring municipalities, will soon be able to drop off recycled materials at a dedicated, staffed facility.

SWDA is excited to announce that "FREE DAY" is returning and will be held on Saturday, March 1, 2024! The event will run from 7 am to 3 pm. For more details, please visit our website at [baldwincountyswda.org](http://baldwincountyswda.org).

This month, we're sharing some easy tips to sort your materials at home before dropping them off at one of our 25 convenient recycling locations. Getting it right from the start makes a huge difference!

### Did You Know?

Plastic is one of the most widely recycled materials in the world, but did you know there are many different types of plastic? Each type has its own unique recycling process. Be sure to check out the graphic below to learn how to identify the various types of plastics. Let's keep Baldwin County recycling smarter and cleaner!

It's never too late to start planning the perfect Valentine's Day! This year, why not give a gift that shows you care for both your loved ones and the planet? Check out our sustainable gift guide for creative ideas that are as eco-friendly as they are thoughtful. From reusable goodies to locally-made treasures, these gifts will make your Valentine's Day both memorable and green!

Drum roll, please!! We're thrilled to introduce Craig Jackson, MRF Manager, and his talented recycling team- true operational masterminds! WELCOME Jacob Reese, Mike Whisenhaut, and James Quick!!

### In This Newsletter Issue:

**MRF Construction Update**

**Fairhope CHaRM**

**Express Employment**

**Free Day!**

**Christmas Tree Recycling Results**

**Quick Guide to Sorting & Plastics Guide**

**Sustainable Valentines Day Gifts**

### Meet the Team

- Craig Jackson
- Jacob Reese
- Mike Whisenhaut

### Sustainability Shout-Out

City of Foley and City of Fairhope

### Community Engagement

Municipality Tours





## MRF Construction Update

With the MRF construction coming to an end we would like to share the exciting news that the Fairhope CHaRM construction is beginning to start. Fulcrum has begun to mobilize their equipment and started grubbing the site so they can begin site work.

Baldwin County Residents will be able to bring their mixed paper, plastics, aluminum, cardboard, glass, batteries, electronics, lightbulbs, tanks and extinguishers, and household hazardous waste to this new facility. Each material will have a designated area where it can be placed, and materials should not be dropped off in bags.

## Express Employment

Finding employees for the MRF has been a great experience, and we are excited to be working with Express Employment to help us hire sorters for the facility. These employees will be working on the line, either removing contamination at the beginning of the process or assisting with hand sorting materials throughout the recycling operation.

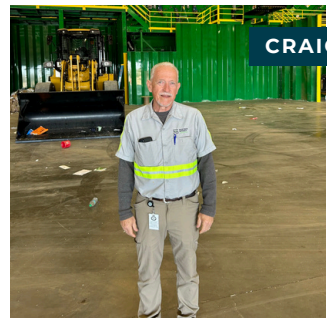
## FREE DAY!!

This year, the Solid Waste Disposal Authority will host a Free Day at each of our landfill locations and the new MRF!

This event will be for Baldwin County residents only, and residents will be required to show ID. Residents can bring the following materials:

	<b>Recycling</b>		
	<b>Yard Waste</b>		
	<b>Electronics</b>		
	<b>Tires</b>		
	<b>Construction Debris</b>		
	<b>Furniture</b>		
	<b>Appliances</b>		
	<b>Household Hazardous Waste</b>		
	<b>Scrap Metal</b>		
	<b>Carpet</b>		
	<b>Paint</b>		

## Meet the Team



**CRAIG JACKSON, MRF MANAGER**



**JACOB RESSE, MRF MAINTENANCE TECH**



**MIKE WHISENHAUT, MRF OPERATOR III**

## Christmas Tree Recycling Results

With the holiday season coming to a close, we wanted to share the data from this year's Christmas Tree recycling program.

We collected 120 lbs of Christmas trees this year! We'd like to thank everyone who participated in recycling their Christmas tree, and we can't wait to see how much we collect next year!

## Sustainability Shout-Out



The SWDA would like to recognize the City of Foley and the City of Fairhope for bringing recycling from their curbside programs to the MRF. We will be using this material to train the sorters we have hired through Express Employment and to test the different parts of the line.

## Valentines Day & Sustainability

Buying gifts for Valentine's Day can be a struggle, so here are some eco-friendly and sustainable gift ideas:

- **Handmade or Upcycled Jewelry:** Choose jewelry made from recycled materials, repurposed metals, or ethically sourced gemstones.
- **DIY Gifts:** Create a custom coupon book filled with fun or romantic vouchers, or make a scrapbook with memories from your relationship.
- **Memory Jar:** Instead of buying something new, create a memory jar with notes of your favorite memories, dreams for the future, or reasons why you love your partner.
- **Plant or Succulent:** Instead of a bouquet of flowers, buy a potted plant or succulent. Not only will it help purify the air, but it will last longer and serve as a reminder of your lasting love.
- **Experience Gifts:** Rather than giving material gifts, give the gift of experiences such as a cooking class, hiking trip, museum visit, beach day, or picnic.

## Plastics Guide

Some plastics are more easily recyclable than others, such as numbers 1, 2, and 5.

Check the number on the container or bottle to identify the type of plastic.

**Plastic Takeaway Tip:** Plastic grocery bags are not recyclable in curbside bins, but they can be returned to the grocery store for reuse or recycling.

						
PET	HDPE	PVC	LDPE	PP	PS	OTHER
POLYETHYLENE TEREPHTHALATE	HIGH-DENSITY POLYETHYLENE	POLYVINYL CHLORIDE	LOW-DENSITY POLYETHYLENE	POLYPROPYLENE	POLYSTYRENE	OTHER
WATER BOTTLES; JARS; CAPS	SHAMPOO BOTTLES; GROCECE BAGS	CLEANING PRODUCTS; SHEETINGS	BREAD BAGS; PLASTIC FILMS	YOGURT CUPS; STRAWS; HANGERS	TAKE-AWAY AND HARD PACKAGING; TOYS	BABY BOTTLES; NYLON; CDS
						



## New Year, New CHaRM!

As the MRF construction nears completion, we are excited to announce that construction for the Fairhope CHaRM is officially underway.

Fulcrum has begun mobilizing their equipment and started grubbing the site to prepare for the next phase of site work.

Baldwin County residents will soon be able to bring their mixed paper, plastics, aluminum, cardboard, glass, batteries, electronics, lightbulbs, tanks, extinguishers, and household hazardous waste to this new facility. Each material will have a designated area for proper disposal, and we kindly ask that materials not be dropped off in bags.

## Sorting Guide for the New CHaRM

**When it comes to recycling at the new CHaRM, check out the tips below to make sure you are recycling properly.**

- **Separate Materials:** Paper: Keep clean paper separate from cardboard and magazines to make recycling easier. Plastics: Check for the recycling number (usually found at the bottom) to ensure plastics are sorted correctly. Metal: Place metal containers in their designated bins.
- **Avoid "Wishcycling":** Don't toss items into the recycling bin just because you think they're recyclable. If in doubt, check with your local recycling program to keep the load free from contamination.
- **Special Items:** Certain items, like batteries, electronics, lightbulbs, and glass, need special handling. Make sure to separate them for proper disposal or recycling at the CHaRM.
- **Use Clear Bins or Labels:** Make sorting easy by using clearly labeled bins for paper, plastic, metal glass. If your recycling service doesn't provide bins, create your own labeled containers at home to stay organized.



### Municipality Tours

In January, we had the pleasure of hosting several employees from the City of Foley and the City of Fairhope for a tour of the new MRF and the Waste and Recycling Adventure Center.



### Board Meeting

The SWDA hosted a festive Christmas dinner with our Board members for the final meeting of the year. It was a wonderful opportunity to reflect on the achievements and progress we've made throughout the year, as well as to look ahead to exciting new initiatives for the future. We are incredibly grateful for the dedication, expertise, and support of our Board members, who play a key role in helping guide the organization and ensure its continued success. Their commitment and passion make a positive impact on our work and the community, and we are fortunate to have such a fantastic group of people supporting our mission



### Contact Us!

**Main Office:**  
**251.972.6878**

---

**Susan Kilby-Aaron**  
Director of Recycling Services  
Skilby@baldwincountyswda.org

**Jennifer Doan**  
Recycling Outreach Coordinator  
Jennifer.Doan@baldwincountyswda.org

**Craig Jackson**  
MRF Manager  
Craig.Jackson@baldwincountyswda.org

### Thanks for Reading!

This is a monthly publication so be on the lookout for the next edition in February 2025!

If you would like to be added to the newsletter list please email Jennifer Doan at [Jennifer.Doan@baldwincountyswda.org](mailto:Jennifer.Doan@baldwincountyswda.org)

For more waste and recycling information please visit: [baldwincountyswda.org](http://baldwincountyswda.org)